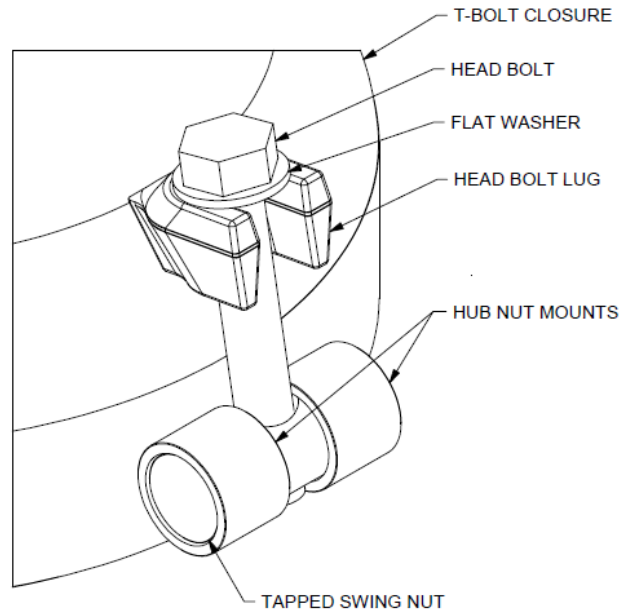
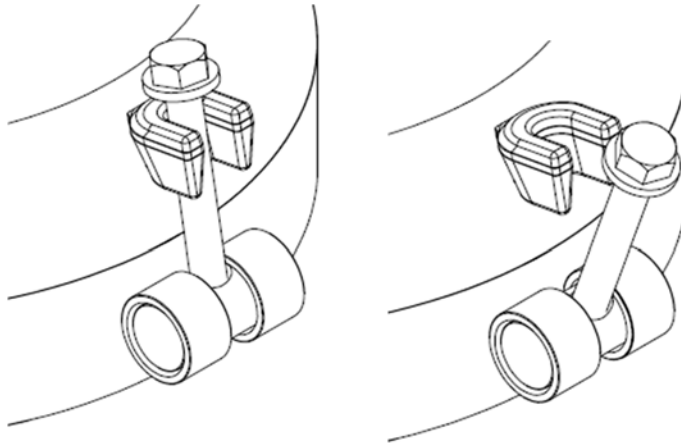
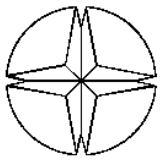


Instructions for Replacing Tapped Swing Nuts

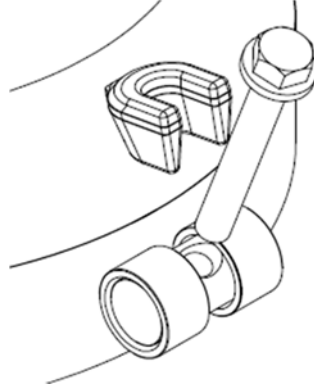


1. Loosen Head Bolt.

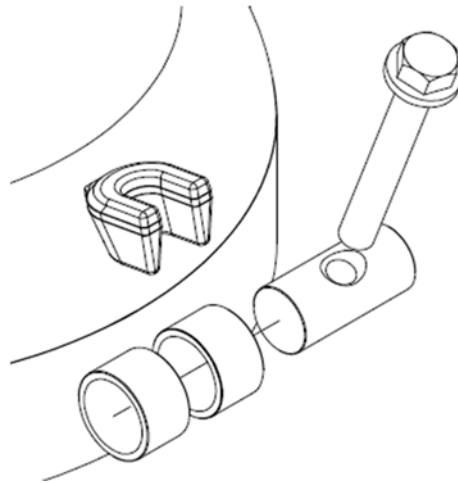




2. Remove Head Bolt from Tapped Swing Nut.



3. Slide Tapped Swing Nut out of the Hub Nut Mounts.



4. Slide the new replacement Tapped Swing Nut into the Hub Nut Mounts.
5. Thread the Head Bolt into the Tapped Swing Nut.
6. Swing the Head Bolt into the Head Bolt Lug.
7. Tighten the Head Bolt to the torque specified in your Installation, Operation Maintenance (IOM) document.
8. Dispose of the old Tapped Swing Nut to ensure that it is not reused.

**If you have questions regarding the replacement process
please contact 502-774-6249.**