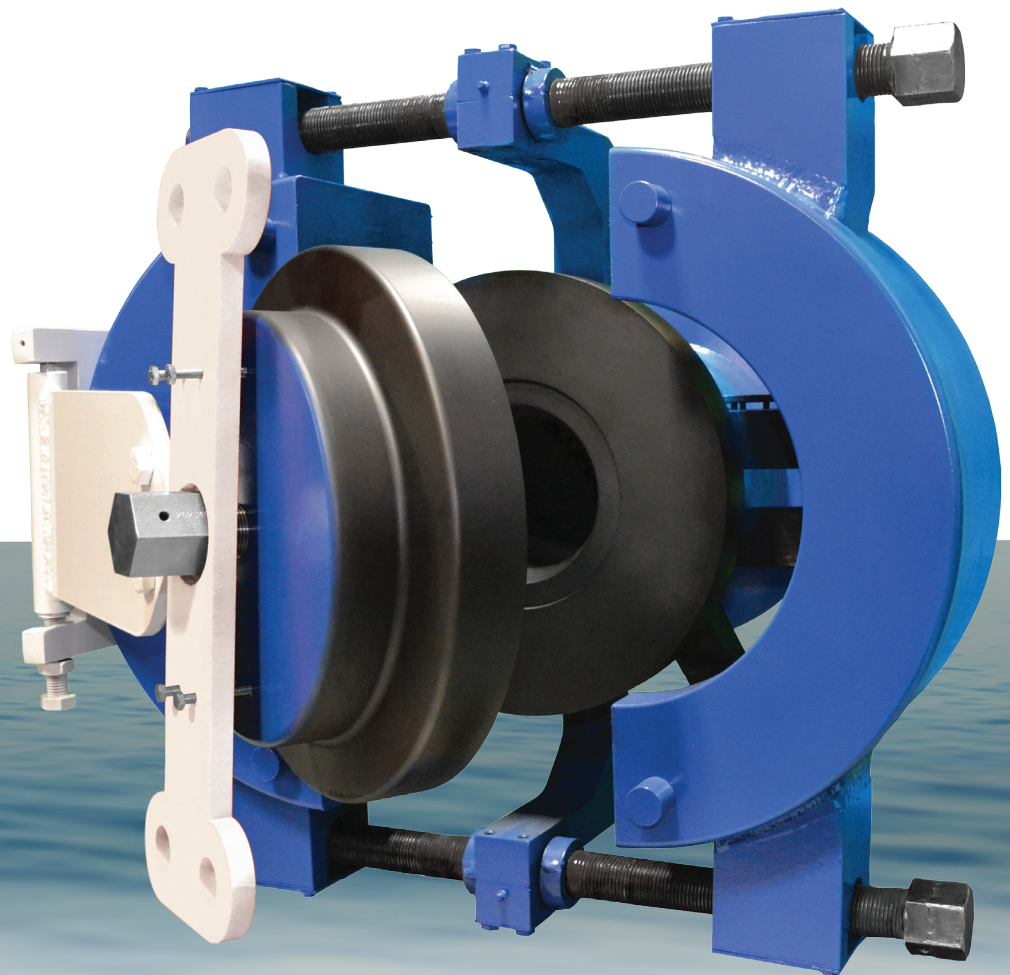


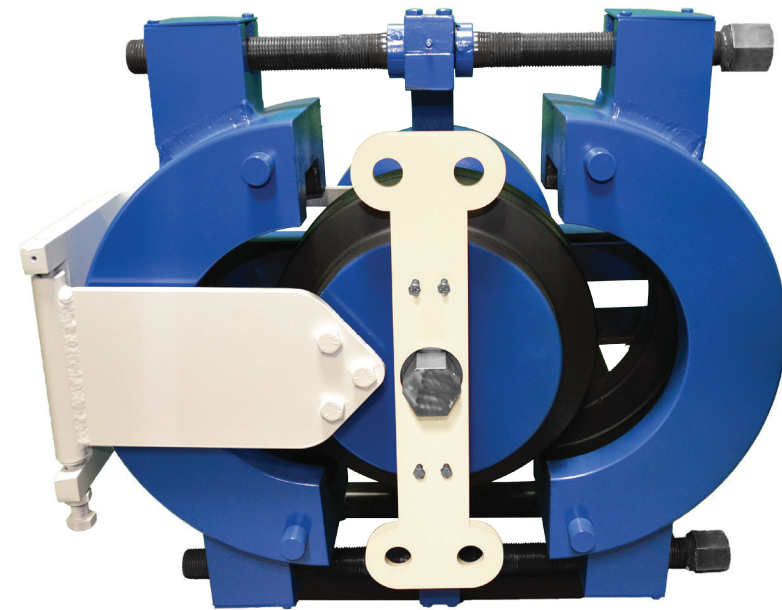
TUBE TURNS UHP™

Ultra-High Pressure Closures
for Pipelines and Vessels

*The Ultimate in Security,
Safety and Ease-of-Use for
Pressures Up to 15,000 psi*



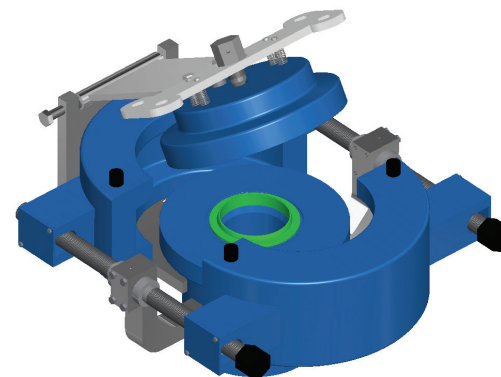
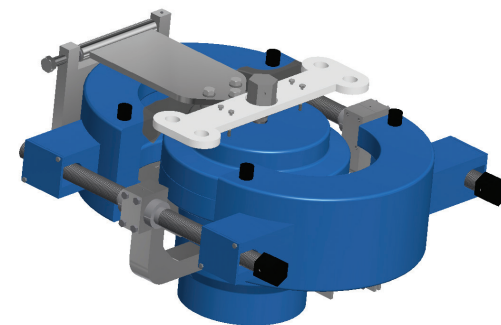
TUBE TURNS UHP™ ULTRA-HIGH PRESSURE CLOSURES



Tube Turns UHP Ultra High Pressure closures provide a reliable, fast, safe and economical alternative for high-pressure vessels that require frequent access, such as high-pressure launchers and receivers, filters, or strainers.

ROBUST AND DEPENDABLE

Tube Turns UHP closures are the heavy-duty version of the Tube Turns legacy line of clamp style (double bolt) closures that span more than 50 years of successful applications in a broad range of sizes and pressures. This Ultra High Pressure design utilizes a self-energized, metal-to-metal seal that allows pressure containment up to working pressures of 15,000 psi (1,034 bar). The clamping forces required to obtain this range of pressures is achieved by the use of two forged and machined heavy-duty clamps that are driven by dual heavy-duty, dual actuating drive screws. This combination ensures positive mating of the head and hub sections by encapsulating them in nearly 360° of clamping contact when the clamps are in the closed position.



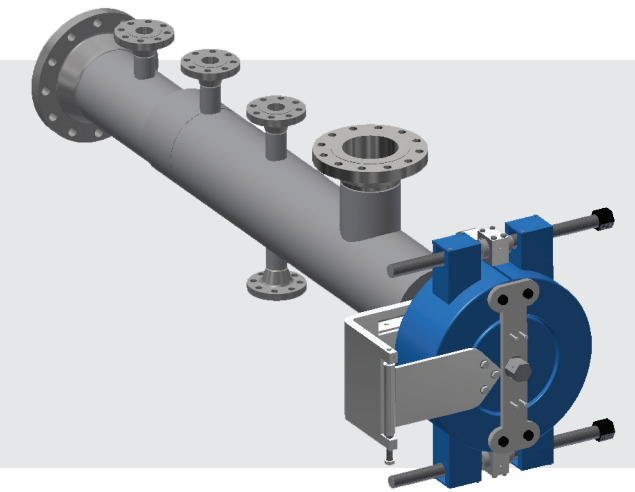
LOW MAINTENANCE

Tube Turns UHP closures include safety features to contain process fluid, protect operators and safeguard the environment. They feature a hinged cover with a pressure warning device and secondary mechanical interlock to prevent accidental opening under pressure. The fully redundant locking mechanism complies with ASME UG-35 (b).

Tube Turns UHP closures are faster and easier to operate than bolted connections. The low-maintenance design is also easier to service, with all wear parts readily accessible. All components except the main seal ring remain attached to the closure assembly, preventing loss or damage of loose parts.

APPLICATIONS

- Offshore and onshore installations
- Pig launchers and receivers
- Inspection and/or manway openings
- High-pressure water or gas injection
- Strainers and filter vessels

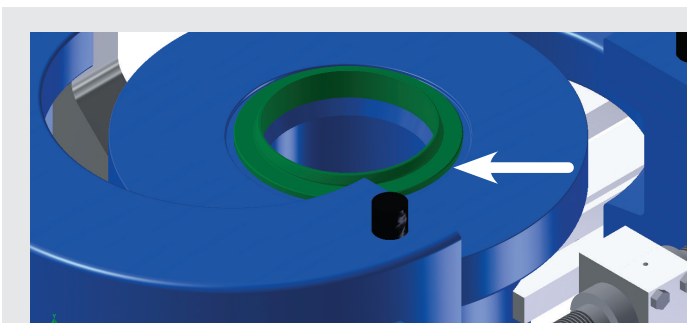


OPTIONS

- Bore sizes from 2" to 12" diameter
- Design pressures to 15,000 psi (1,034 bar)
- Horizontal and vertical configurations
- Manual or automated operation (hydraulic or electric)
- Weld-on (permanent) or flange-equipped (bolt-on service) hubs
- Through-bore or taper-bore IDs
- Wide variety of materials to suit application requirements

MATERIALS

We offer Tube Turns UHP closures in a variety of materials, all of which are ASME/ASTM approved grades. Materials include low-alloy carbon steel, stainless steel, duplex stainless steel, carbon steel clad with Corrosion Resistant Alloy (CRA), and other corrosion-resistant and/or high-strength materials. We carefully match material grades and thicknesses to assure compatibility of the closure welding hub with your connection point and welding processes. The major pressure boundary components of the closure are furnished with Mill Test Reports (MTRs).



The pressure-energized seal provides a gas-tight, metal-to-metal seal without the need for a flange gasket

DESIGN & QUALITY

The Tube Turns UHP closure design has been verified through proven stress calculations and the latest in finite element analysis (FEA) software, establishing a high level of confidence in the structural integrity of the closures. While adhering to ISO 9001:2008, we employ and follow strict quality control guidelines which are audited accordingly by an accredited third-party organization. All welding procedures have been written and developed in accordance with ASME Section IX and the accompanying NDE procedures per ASME Section V.

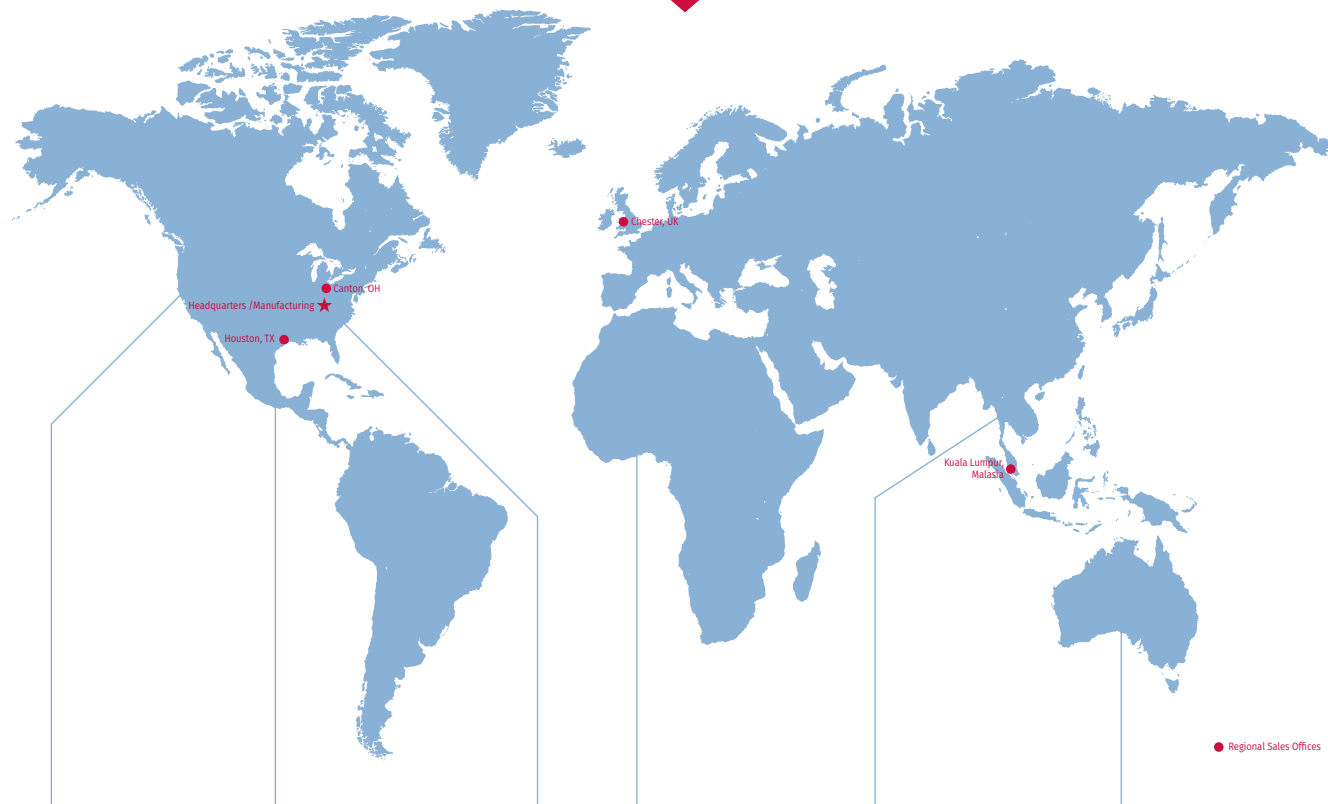
DESIGN COMPLIANCE

- ASME Section VIII, Division 1 & 2
- ASME B31.3, B31.4 & 31.8
- NACE MR0175 / ISO 15156



Tube Turns: Your Source for Lasting Value

Tube Turns UHP closures are the result of more than a half century of continuous development in closure design and manufacturing. Tube Turns Products from Sypris Technologies have been used in a broad range of applications in every major industrial sector. We combine a vast amount of experience, expertise and engineering resources to provide the safest, most effective closure solution for your application.



US, CANADA & LATIN AMERICA
+1 502-774-6329
NALA-sales@Sypris.com

MEXICO
+1 502-774-6240
Mex-sales@Sypris.com

US GULF OF MEXICO REGION
+1 502-774-6256
GOM-sales@Sypris.com

EUROPE, MIDDLE EAST & AFRICA
+44 (0)151-327-2290
EMEA-sales@Sypris.com

SOUTH EAST ASIA
+44 (0)151-327-2290
SEA-sales@Sypris.com

AUSTRALIA/ OCEANIA
+44 (0)151-327-2290
Oceania-sales@Sypris.com

Aftermarket & Service:
ttaftermarket@sypris.com
www.tubeturns.com

Headquarters/Manufacturing: 2612 Howard Street, Louisville, KY 40211 | 502-774-6011 | www.tubeturns.com



The information contained herein is based on data and information developed in the Laboratories of Sypris Technologies ("Seller"), but is presented without guarantee or warranty, and the seller disclaims any liability incurred from the use thereof. Nothing contained herein is to be construed as a recommendation for any use, including without limitation, any use in a commercial process not controlled by seller, nor for a use which is in violation of any existing patent, foreign or domestic or of applicable laws and regulations.

©2016 Sypris Technologies, Inc., Tube Turns Products

Tube Turns UHP is a trademark of Sypris Technologies, Inc.